



## VAN RACKING SYSTEMS



[WWW.BAGGIOEDESORDI.COM](http://WWW.BAGGIOEDESORDI.COM)

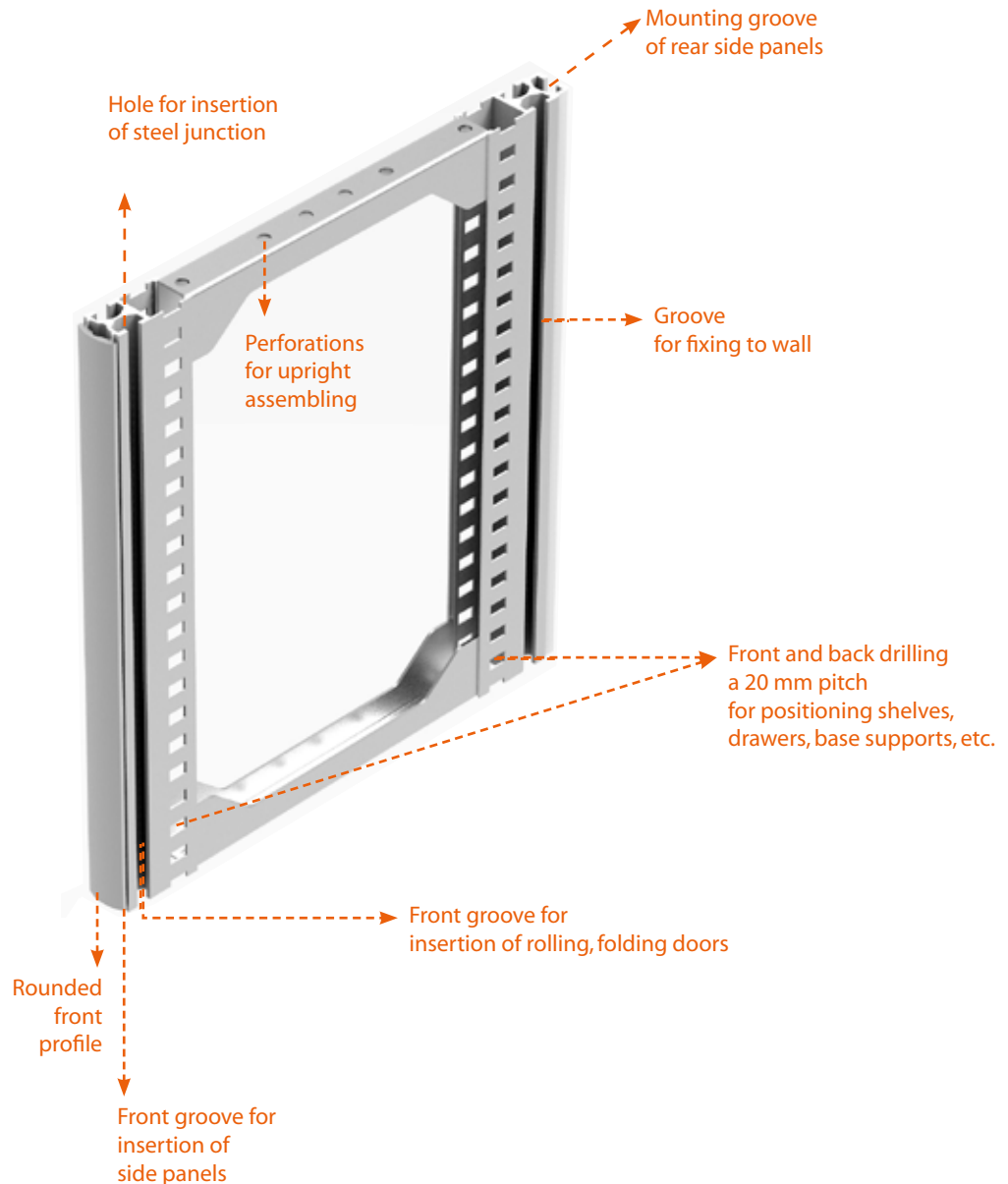
## VAN RACKING SYSTEMS

We organize the space of each van and improving its capacity.  
Our objective?  
Making the interior equipment rational and safe.

### Upright

- > Material: Aluminum
- > 28 modules divided in 4 depths and 7 heights.
- > Handle finishing of black color.

The innovative upright "Just Fix", created by an extruded aluminum profile, can satisfy every need, creating modular and suitable solution for any wall.



## STRENGTH AND MODULARITY

### C shelf

Shelves closed and bordered on all four sides, with the front edge lowered to facilitate access to the load and pickup the material.

The shelf has perforated to divide the space with dividers and fix the shelf overhanging to the upright to exploit the convexity of the wall of the vehicle.



Detail ALU shelf



Detail MIX shelf



Modularity of shelf and overhang assembly

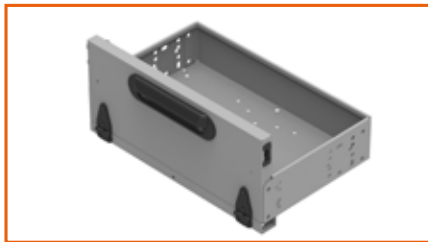
## VERSATILITY OF USE

### **BS shelf**

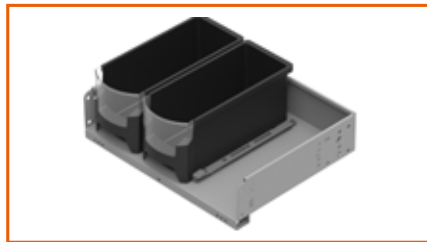
A wide range of solutions offered to solve the management of transport during labour.



BS shelf



Flap



Plastic bin S-BOXX



Plastic bin AC



Suitcase L-BOXX



Border for shelf

## COMFORT AND SAFETY

### Drawers

Total opening drawers for easy and comfortable access to any loaded.

Ergonomic handle in plastic.

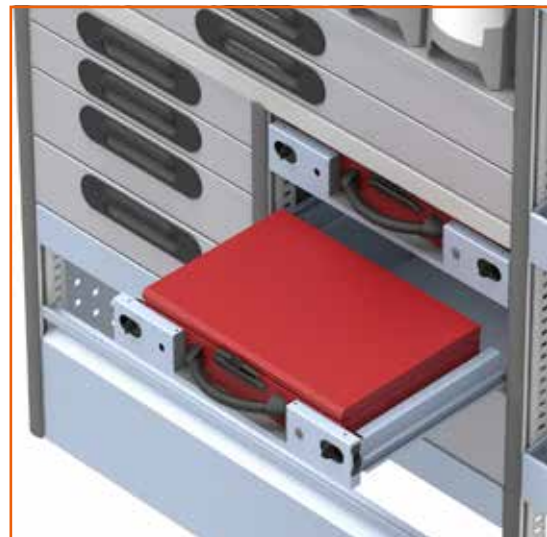
Runner guides robust and compact to minimize the lateral dimensions and obtain a greater loading surface.

Runner guide with locking system for drawer closed and open.

Internal division with dividers and / or plastic bins for small parts.  
Inserting rubber mat ribbed non-slip, anti-mold and anti-odor.



Drawers



Drawers with suitcase

## REVOLUTION ALU

### NEW GENERATION VAN EQUIPMENT

#### Lightness

The fundamental quality of aluminum is lightweight. It has a density of 2.7 kg / dm<sup>3</sup> against 7.8 kg / dm<sup>3</sup> of steel.

With the use of this material we can reduce the weight of an equipment of medium of 50% compared to those traditionally made of steel, thus arriving at increasing the residual capacity of the vehicle.

#### Resistance

Through a study and an accurate design and thanks to shapings and folds made possible by the use of advanced technologies present in the company, we have obtained loading capacity similar to those that we obtain with the use of steel plate.

#### Design

Not only as a visual satisfaction but also like functionality and respect for the environment.

To construct the components of the new series REVOLUTION using aluminum sheets that are subsequently painted to avoid the oxidation of the material and to maintain its initial characteristics unaltered over time. Of no less importance is that aluminum ...

## 100% RECYCLABLE

Products made with this metal are completely recyclable. In fact, from aluminum are obtained again products of the same quality of the products of origin.





## REVOLUTION MIX VAN RACKING SYSTEM FLEXIBLE AND FUNCTIONAL

A steel core with an aluminum structure. The internal equipment in steel REVOLUTION MIX combines the versatility and modularity of aluminum uprights with the robustness and the countless variations of the steel modules that allow to meet any construction.

The steel modules are fixed firmly to the upright thus forming a single and solid structure.




[www.tuv.com](http://www.tuv.com)  
ID 000044515




**TABLE COMPONENTS FOR VAN RACKING**

<p>Uprights</p> 	Height	80	240	320	400	480	720	960	1200
	Depth	172	236	300	364	428			

<p>Shelf BS</p> 	Width	480	753	990	1245	1500			
	Depth	236	268	300	364	428			

<p>Plastic bin AC</p> 	Height	126	162						
	Depth	236	300	364					






<p>Plastic bin S-BOXX</p> 	Height	-	-	-	-				
	Depth	-	-	-	-				

<p>Suitcases L-BOXX</p> 	Height	-	-	-					
	Depth	-	-	-					



## REVOLUTION MIX

### SYSTEM REVOLUTION ALU/MIX

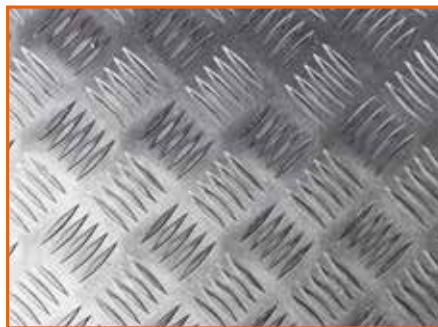
C shelf 	Width	225	480	735	990	1245	1500		
	Depth	236	268	300	364	428			
Containment edges 	Width	225	480	735	990	1245	1500		
	Height								
Folding edges 	Width	480	735	990	1245	1500			
	Height	250							
Cabinet 	Height	480	720	960					
	Width	480	735	990					
	Depth	300	364	428					
Drawers and drawer for case 	Height	480	735	990					
	Width	300	364	428					
	Depth	80	120	160	240				

## FLOORS

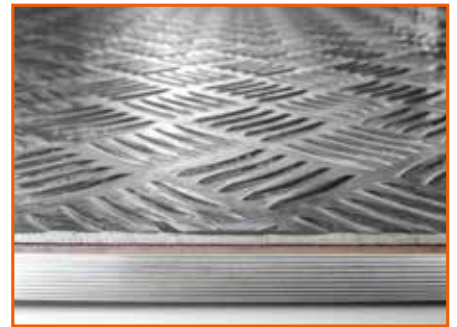
### Aluminium chequer plate

Appropriate for heavy and frequent loadings. Made in aluminium plate, obtained from one single sheet without junctions.

The floor made with this material gives the best guarantees of long-term lasting keeping the original characteristics of the product.



Detail of material



Details of floor's edge

### Multilayer Plywood

Appropriate for working vans. Made in 12mm plywood multilayer. It is a waterproof material due to a phenolic resin treatment. It has a non-slip surface and offers a great mechanical and long-lasting resistance guarantee.

All entries of the vehicle are protected with an aluminum rough edge covering, which is assembled in a way that its superior part is at the same level of the plywood floor.



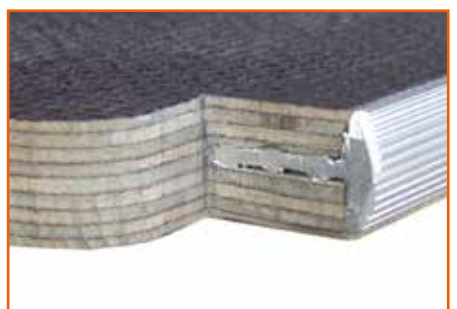
Detail of material



Floor blending



Details of base plate for hook



Details of floor's edge

## WALL PANELS

### Aluminium plate

Appropriate for work vans. Made in plane aluminum plate. It has a reduced weight, offers a good protection to the vehicle's walls and at the same time gives it an image of efficiency and order. The fastening to the vehicle is made with rivets.



### Polypropylene

Polypropylene honeycomb side panels 4 mm thick with scratch-resistant surface. Lightweight and durable.



## ACCESSORY PROTECTION

### Wheel arch cover

Made in aluminium chequer plate it protects the wheel arch.

### Dividing wall

Made in aluminium chequer plate, its shaped according to the structure of the diving wall. It is fixed to the wall with the help of screws or rivets. It offers an extra protection to the driver's cabin and the possibility to add to itself lashing hooks to transport material.



## ACCESSORIES

### **Anchor Brackets**

Robust galvanized brackets, fixed to the uprights of the vehicle allow a uniform weight distribution on the supporting structure.



Tear-proof system

### **Lashing rails**

The anchors rails in aluminum can be embedded on the loading floor or installed on the internal walls of the vehicle. Are completed with rings, hooks, straps that enable the installation of the load in a stable and safe way.



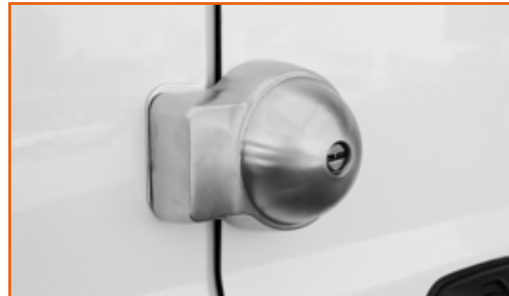
### Complementary accessories

A wide range of accessories complete the interior equipment and allow to store the material in an orderly and efficient. With a choice of these items you can customize your vehicle according to your needs.



### Hygiene and safety

The wide choice of accessories related to the hygiene of the operator and tools help to make the working environment if convenient, comfortable and always clean. The safety devices installed on the doors protect the load compartment to prevent any kind of forcing.



### Electrical installations

With the installation of LED lamps or halogen lamps, the longitudinal struts of the roof of the vehicle can be illuminated optimal the work space. The system is customizable with switches, sockets, inverters, generators to better meet the business needs.





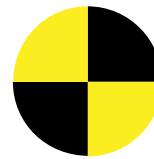
# CERTIFICATIONS



## Our reliability is certified

Our products and our work are certified to offer always the tranquility of being in good hands.

ISO, TÜV GS, CE and Crash test show that we reliable partners and that our product is safe, built to great performance and worked carefully and with meticulous precision.



## SPECIAL SOLUTION

Baggio & De Sordi has always supported the direct relationship and collaboration with its customers. From this report derive specific preparations that aim to solve specific needs. Answering a request gives us the opportunity to study and then offer a customized product.







**BAGGIO  
DE SORDI**

Via Conca Nuova, 32  
31040 Gavera del Montello - TV - Italy  
Tel.: +39 0422 776015 - Fax: +39 0422 882274  
info@baggioedesordi.com

**[WWW.BAGGIOEDESORDI.COM](http://WWW.BAGGIOEDESORDI.COM)**